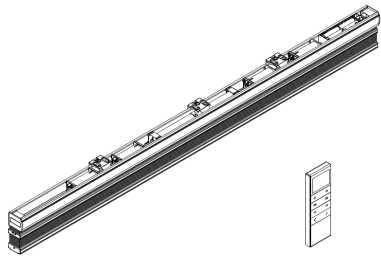


Simple Touch® Top Down Bottom Up & Day/Night Cellular Shade User Guide

Installation



Motorized Cellular Shade & 15-Channel Remote

Identify your cellular shade and parts (your parts may vary, depending on the custom request, size of the headrail & shade you are purchasing.)

9/16" rail brackets 3/4" rail brackets



Brackets & screws



Spacers (optional)

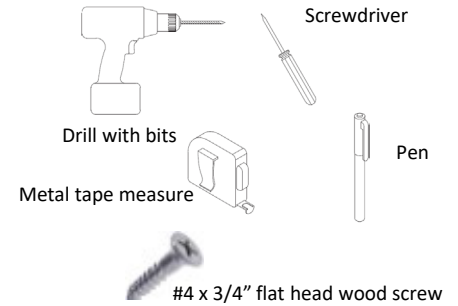


Extension brackets (optional)

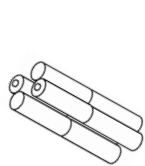


screws

Tools you may need (not included)



Shade width	Qty of brackets
$W \leq 36"$	2
$36" < W \leq 72"$	3
$72" < W \leq 96"$	4
$96" < W \leq 120"$	5



8 Lithium AA batteries

or



Rechargeable battery pack (includes a charge block and a 80" USB charge cable) sold separately

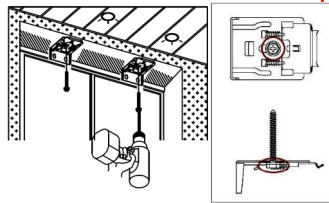
Power sources – 8 AA batteries or the rechargeable battery pack

FOR 3/4" HEADRAIL BRACKETS

Install the brackets

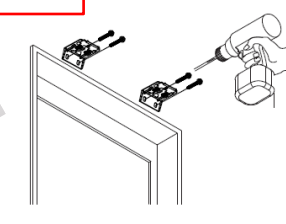
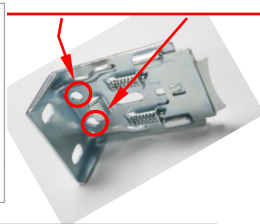
- Mark the bracket locations, separating the brackets evenly. Make sure all brackets are aligned and level with each other.
- For inside mount - Install the bracket with the hole at top center by using the included screw or with two holes at the top rear side by using #4 x 3/4" flat head wood screws (not included).
- For outside mount – install the bracket with two holes at the back side with included screws.

- Fasten the screws completely.
- Install the shade with the extension brackets (optional)
 - Install the extension bracket with at least 2 screws.
 - Attach the mounting brackets to the extension brackets with the screws.

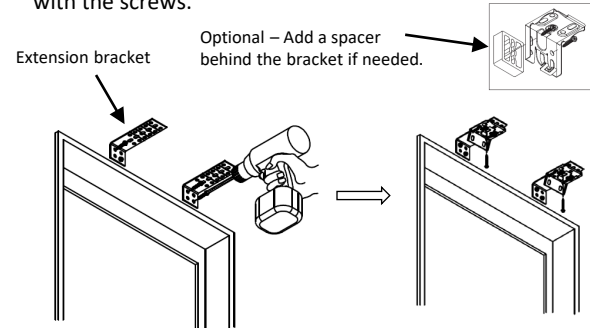


Inside Mount

Use #4 x 3/4" flat head wood screws (not included) for these two holes

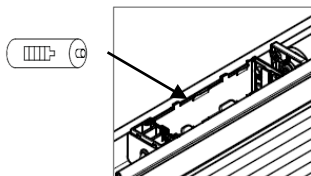


Outside Mount



Install the power sources

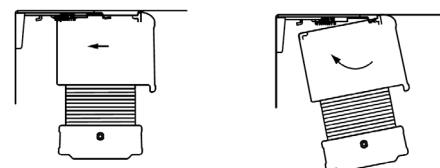
- For AA batteries – put 8 AA batteries into the battery box, refer to the image below.



- For the rechargeable battery pack – follow the instruction of the Simple Touch rechargeable batter pack.

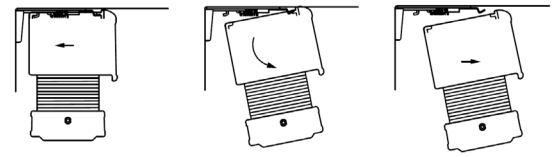
Attach the cell shade to brackets

- Position the headrail with the front lip resting on the top hooks of all the brackets.
- Push the bottom of headrail firmly upward and toward the window until the groove at the bottom of the headrail snaps into place.



How to remove the shade from the brackets

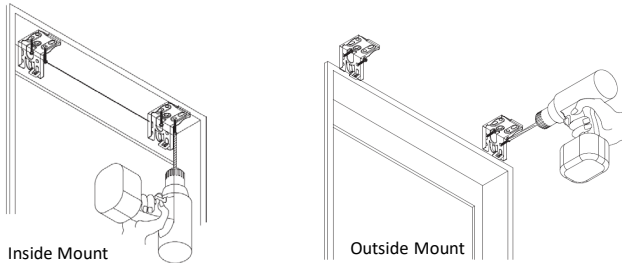
- Raise the shade completely. Push the headrail toward to the wall.
- Tilt the backside of the headrail down
- Once the back of the headrail clears the brackets, pull the headrail off the front of brackets.



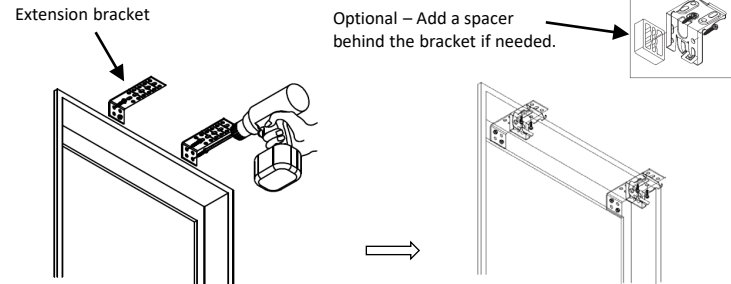
FOR 9/16" HEADRAIL BRACKETS

Install the brackets

- Mark the bracket locations. Space the brackets evenly and make sure the brackets will not interfere with any mechanism or other internal headrail parts.
- Install the brackets using screws (included) and tighten them completely.
- Make sure all brackets are aligned and level with each other.

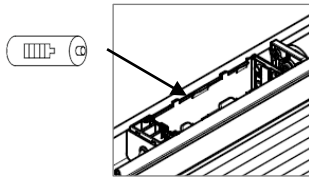


- Install the shade with extension brackets (optional)
 - Install the extension bracket with at least 2 screws.
 - Attach the hidden brackets to the extension brackets with the screws.



Install the power sources

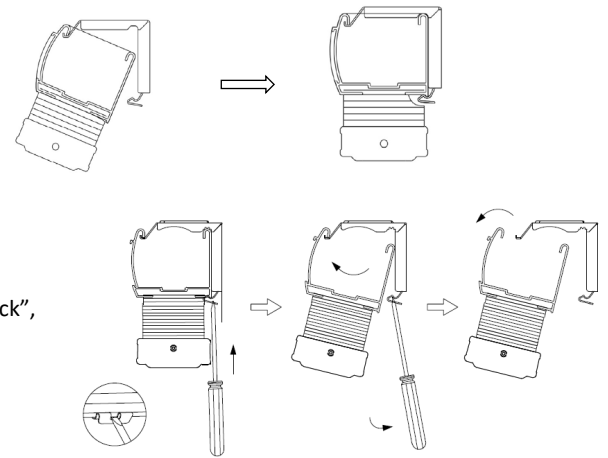
- For AA batteries – put 8 AA batteries into the battery box, refer to the image below.



- For the rechargeable battery pack – follow the instruction of the Simple Touch rechargeable batter pack.

Attach the cell shade

- Position the headrail with the front lip resting on the top hooks of all the brackets.
- Push the bottom of headrail firmly upward and toward the window until the groove at the bottom of the headrail snaps into place.



How to remove the shade from the brackets

- Use the remote to raise the shade completely.
- Use a flat screw to push the bracket tab toward to the wall. Once you hear a “click”, then the shade will be released from the bracket.
- Repeat above step to release the shade from other brackets.

Care and Clean

- Wipe the shade periodically with a soft dust cloth or dusting mitt, or vacuum with a lowest speed.

Notes

- Do not spill water to the headrail and the remote.
- Do not clean/ operate the motorized shade with wet hands
- The warranty for your shades does not cover damage caused by improper cleaning.
- Changing the batteries won't change the programming setting.
- The motorized shade is for indoor use only.
- Do not use the motorized shades at the wet area.

FOR INDOOR USE ONLY

This motorized shade has been tested and found to complete with the limits for a Class B digital device, pursuant to part 15 of the FCC rules. These limits are designed to provide reasonable protection against harmful interference in a residential installation. This shade generates, uses and can radiate radio-frequency energy. If this shade is not installed and used in accordance with the instructions, it may cause harmful interference to radio communications. However, there is no guarantee that interference will not occur in a particular installation. If this shade does cause harmful interference to radio or television reception, which can be determined by turning the shade off and on, correct the interference by one or more of the following measures:

- Reorient or relocate the receiving antenna.
- Increase separation between shade and receiver.
- Connect equipment to an outlet on a circuit different from that to which the receiver is located.
- Consult your dealer or an experienced radio/TV technician.

Any changes or modifications to the product that are not expressly approved by HT could void the user's authority to operate this shade. Use of a shielded interface cable is required to comply with the Class B limits of Part 15 of FCC rules. For more regulatory information, see the electronic user guide. HT shall not be liable for any direct, indirect, incidental, consequential, or other damage alleged in connection with the furnishing or use of this information.



ID# 2AWSE-STP030

WARNING/ADVERTENCIA



Window blind cord can STRANGLE your child. To prevent strangulation, purchase cordless products or products with inaccessible cords.

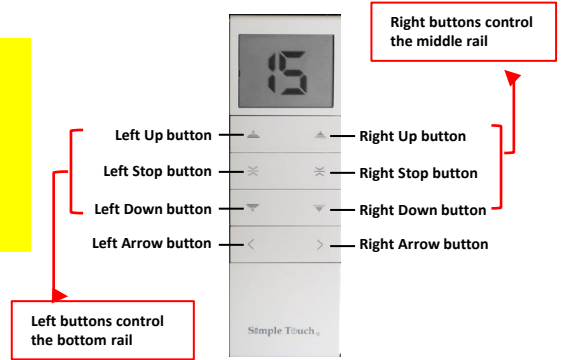
La cuerda de la persiana puede ESTRANGULAR a su niño. Para evitar el estrangulamiento, compre alternativas cuerda o productos con cuerdas inaccesibles.



Don't worry about the programming! This Simple Touch® motorized shade has connected to the remote and is ready to use.


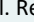

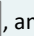
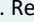

Option to program "My Favorite Position" followed with the instruction below.

Enjoy your new motorized shade!




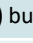
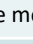
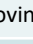
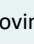
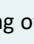


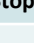
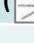
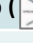

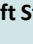



Features and Operation

FEATURES

- This Simple Touch® 15-channel remote works with the Top Down Bottom Up Cellular Shade and Day/ Night Cellular Shade.
- Each channel can only control **ONE** motorized shade. One shade can only be connected to **ONE** channel.
- Channel "0" is designed to control multiple shades. The maximum controlled quantity is 15 shades.
- Right Up** , **Right Stop** , and **Right Down**  buttons control the middle rail. **Left Up** , **Left Stop** , and **Left Down**  buttons control the bottom rail. Refer image above for more info.

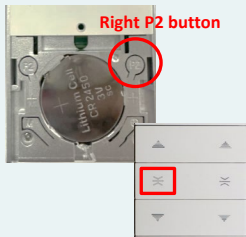
OPERATIONS

- Click the **Left Arrow**  and **Right Arrow**  buttons to switch within channels.
- Click the **Up** ( ) or **Down** ( ) buttons to control rails go up or go down.
- Click the **Stop** ( ) buttons to stop the moving of the shade.
- After set up Upper and Lower limits, press either **Up** ( ) or **Down** ( ) buttons for 2 seconds to control both middle and bottom rails at the same time. Click any **Stop** ( ) button to stop moving.
- Go to Channel "0" to control all the motorized shades connected to this remote.
- After set up "My Favorite Position", press **Right Stop**  or **Left Stop**  button for 3 seconds to control both middle and bottom rails to my favorite position.

Programming Instructions (optional setup)

PROGRAMMING FOR MY FAVORITE POSITION

Set Up My Favorite Bottom Rail Position



Step 1. Click the **Right Arrow** or **Left Arrow** buttons to select the channel. If you only have one shade, please stay with channel #1.

Step 2. Control the **bottom rail** to your favorite position by pressing **Left Up** or **Left Down** buttons.

Step 3. Click the **Right P2 button** on the back side of the remote once, then shade jogs once. Jogs x 1

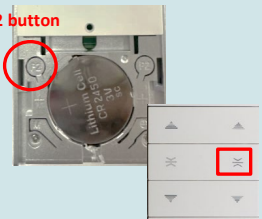
NOTE. DO NOT USE A PIN OR A NEEDLE TO PRESS THE P2 BUTTON. IT MAY DAMAGE THE P2 BUTTON. 

Step 4. Click the **Left Stop** button, then shade jogs once. Jogs x 1

Step 5. Click the **Left Stop** button again, then shade jogs twice. Jogs x 2

Follow the step 3 to Step 5 above to remove My Favorite Bottom Rail Position.

Set Up My Favorite Middle Rail Position



Step 1. Control the **middle rail** to your favorite position by pressing **Right Up** or **Right Down** buttons.

Step 2. Click the **Left P2 button**, then shade jogs once. Jogs x 1

Step 3. Click the **Right Stop** button, then shade jogs once. Jogs x 1

Step 4. Click the **Right Stop** button again, then shade jogs twice. Jogs x 2

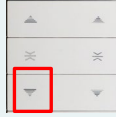
Follow step 2 to step 4 above to remove My Favorite Middle Rail Position.



You can find the P2 buttons after removed the cover.

RESET THE LIMIT

Remove the limits



Step 1. Select the channel you wish to reset the limit.

Step 2. Click the **Right P2 button** once, the motor jogs once.

Jogs x 1

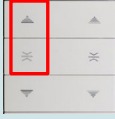
Step 3. Click the **Left Down button** once, the motor jogs once.

Jogs x 1

Step 4. Click the **Right P2 button** again, the motor jogs twice.

Jogs x 2

Set Up the Upper Limit



Step 1. Press and hold the **Right Up button** to control the middle rail to the top position. Click the **Right Stop button** to stop the moving, then press and hold the **Left Up button** to control the bottom rail to the top position. Click **Left Stop button** when it hits the middle rail.

Step 2. Press **Left Up & Left Stop buttons** at the same time for 2-3 seconds, motor jogs twice.

Jogs x 2

Set Up the Lower Limit



Step 1. Press the **Left Down button** to control the **bottom rail** moving down until it reaches the ordered drop height. Click the **Left Stop button** to stop moving.

Step 2. Press **Right Down button** to control the middle rail moving down until it hits the bottom rail. Click the **Right Stop button** to stop moving.

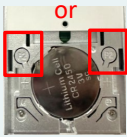
Jogs x 2

Step 3. Press and hold **Right Down & Right Stop buttons** at the same time for 2-3 seconds, motor jogs twice.

NOTE – SET UP THE LOWER LIMIT WITHIN 2 MINUTES AFTER FINISHED THE UPPER LIMIT SETUP.

DUPLICATE THE REMOTE

Duplicate the remote



Step 1. Select the channel/shade you wish to duplicate on the existing remote.

Step 2. Click one of the **P2 button** once, the motor jogs once.

Jogs x 1

Step 3. Click the same **P2 button** again, the motor jogs once.

Jogs x 1

Step 4. Select the channel you wish to copy to on the new remote. Click one of the **P2 button** once, the motor jogs twice.

Jogs x 2

Duplicate the remote is done.

Remove the duplicated remote



Step 1. Select the channel on the remote you wish to keep. Click one of the **P2 button** once, the motor jogs once.

Jogs x 1

Step 2. Click the same **P2 button** again, the motor jogs once.

Jogs x 1

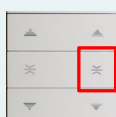
Step 3. Select the channel that connected to the same shade on the remote you wish to remove. Click one of the **P2 button** once, the motor jogs twice.

Jogs x 2

Remove the duplicated remote is done.

DISCONNECT ALL REMOTES

Disconnect remotes



Step 1. Select the channel on the remote.

Step 1. Click **Right P2 button** once, the motor jogs once.

Jogs x 1

Step 2. Click **Right Stop button** once, the motor jogs once.

Jogs x 1

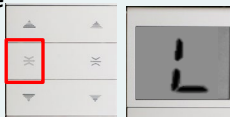
Step 3. Click **Right P2 button** again, the motor jogs twice.

Jogs x 2

All remotes connected to this channel/shade have been disconnected.

LOCK/UNLOCK FRONT BUTTONS TO PREVENT PROGRAM RESET

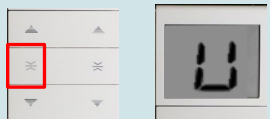
Lock the remote



Step 1. Press and hold the **Left Stop button** until a “L” shown on the screen (it takes around 15 seconds).

“LOCK” is done.

Unlock the remote



Step 1. Press and hold the **Left Stop button** until a “U” shown on the screen (it takes around 15 seconds).

“UNLOCK” is done.

HIDE/UNHIDE UNUSED CHANNELS ON THE REMOTE (Make sure the front buttons are in unlock status before processing the steps below.)

Hide unused channels



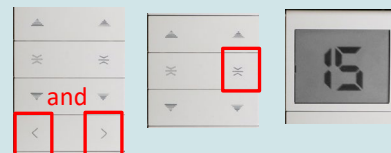
Step 1. Press and hold both **Left Arrow and Right Arrow buttons** at the same time until number “15” appears on the screen.

Step 2. Select the last channel you wish to keep by clicking the **Left Arrow or Right Arrow buttons**.

Step 3. Press and hold the **Right Stop button** until the channel number appears on the screen.

Hide unused channels is done.

Unhide unused channels



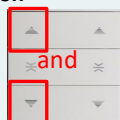
Step 1. Press and hold both **Left Arrow and Right Arrow buttons** at the same time until number “15” appears on the screen.

Step 2. Go the channel 15. Press and hold the **Right Stop button** until number “15” appears on the screen.

Unhide unused channels is done.

REVERSE THE MOTOR DIRECTION

Reverse the motor direction



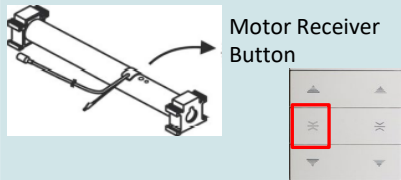
Step. 1 Press and hold **Left Up and Left Down buttons** until the motor jogs once.

Jogs x 1

Reverse the motor direction is done.

FREQUENCY CONNECTION (CONNECT THE REMOTE TO THE MOTOR)

Connect the remote to the motor



Motor Receiver Button

Step 1. Select the channel on the remote with clicking the **Left Arrow** and/ or **Right Arrow** buttons.

Step 2. Press the **Motor Receiver button** for 2 seconds, motor jogs once, and then release Motor Receiver button.

Jogs x 1

Step 3. Press and hold the **Left Stop button** on the remote (around 2-3 seconds) till the motor jogs twice.

Jogs x 2

Continue to set up the top and bottom limits (see the instructions above) before operating the motorized shade.