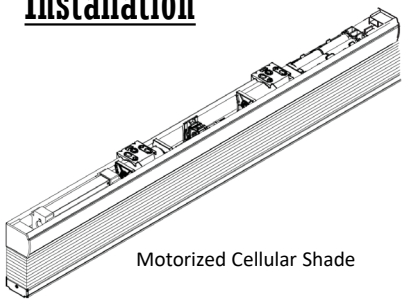


Rollease Automate Cellular Shade Installation Guide

Installation



Solar panel (optional)

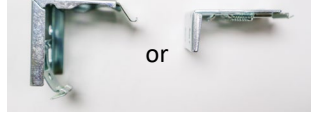


Rechargeable battery pack (includes a charge block and a 156" USB charge cable)

IDENTIFY YOUR CELLULAR SHADE AND PARTS

your parts may vary, depending on the custom request, size of the shade, and size of the headrail you are purchasing.

9/16" rail brackets 3/4" rail brackets



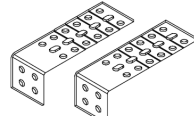
or



screws



Remote

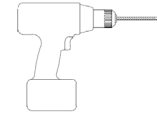


Extension brackets (optional)



Spacers (optional)

TOOLS AND PARTS YOU MAY NEED (not included)



Drill with bits



Screwdriver



Metal tape measure



Pen



#4 x 3/4" flat head wood screw



Reloadable battery tube (includes 8 AA batteries)

Shade width	Qty of brackets
W ≤ 36"	2
36" < W ≤ 72"	3
72" < W ≤ 96"	4
96" < W ≤ 120"	5

1 set of the rechargeable battery pack or the reloadable battery tube

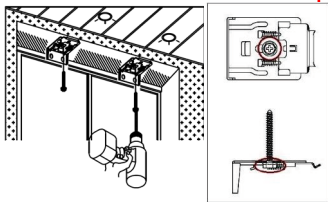
FOR THE 3/4" RAIL BRACKETS

1. Install the brackets

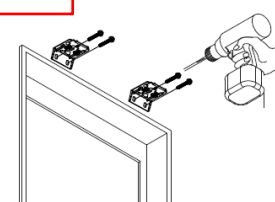
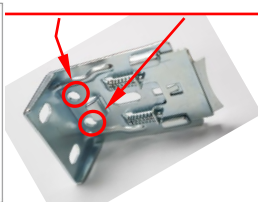
- Mark the bracket locations, separating the brackets evenly. Make sure all brackets are aligned and level with each other.
- For inside mount - Install the bracket with the hole at top center by using the included screw or with two holes at the top rear side by using #4 x 3/4" flat head wood screws (not included).
- For outside mount - install the bracket with two holes at the back side with included screws.

- Fasten the screws completely.
- Install the shade with the extension brackets (optional)
 - Install the extension bracket with at least 2 screws.
 - Attach the mounting brackets to the extension brackets with the screws.

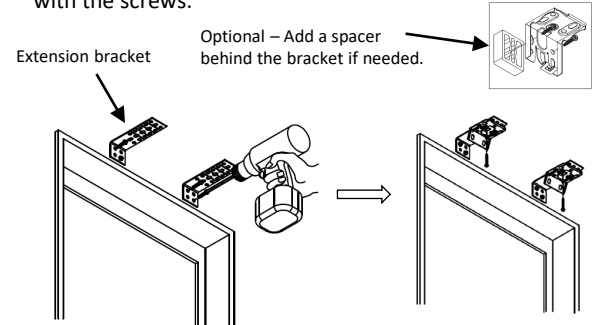
Use #4 x 3/4" flat head wood screws (not included) for these two holes



Inside Mount



Outside Mount



Optional - Add a spacer behind the bracket if needed.

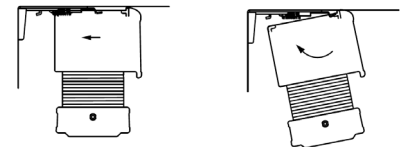
2. Install the battery power and/ or the solar panel (depending on the parts you are purchasing)

- Follow the installation instruction inside the Rollease Automate package to install the battery and/ or solar panel.

NOTE - THE SOLAR PANEL WORKS ONLY WITH THE RECHARGEABLE BATTERY PACK.

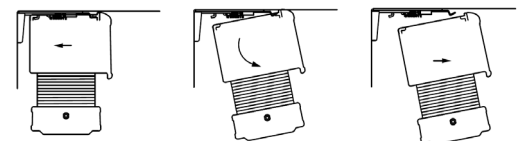
3. Attach the cell shade

- Position the headrail with the front lip resting on the top hooks of all the brackets.
- Push the bottom of headrail firmly upward and toward the window until the groove at the bottom of the headrail snaps into place.
- Connect the motor to the battery power.



4. How to remove the shade from the brackets

- Raise the shade completely. Push the headrail toward the wall.
- Tilt the backside of the headrail down
- Once the back of the headrail clears the brackets, pull the headrail off the front of brackets.

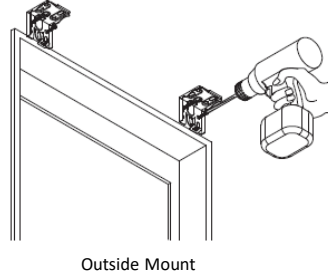
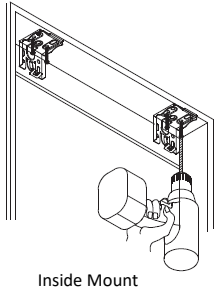


Rollease Automate Cellular Shade Installation Guide

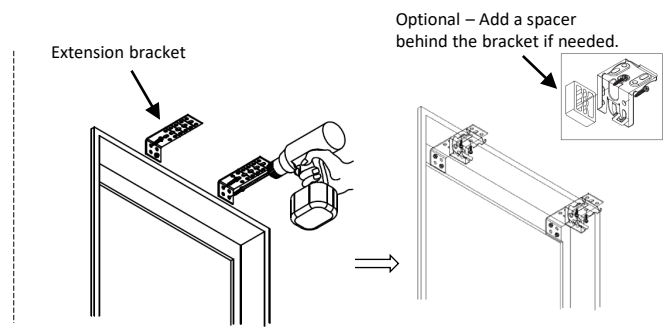
FOR 9/16" RAIL BRACKETS

1. Install the brackets

- Mark the bracket locations, separating the brackets evenly. Make sure all brackets are aligned and level with each other.
- For inside mount - Install the bracket with the holes at top by using the included screws.
- For outside mount – install the bracket with the holes at the back side with included screws.



- Fasten the screws completely.
- Install the shade with the extension brackets (optional)
 - Install the extension bracket with at least 2 screws.
 - Attach the mounting brackets to the extension brackets with the screws.

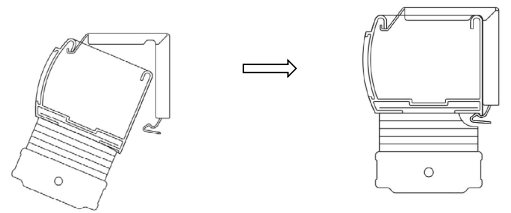


2. Install the battery power and/ or the solar panel (depending on the parts you are purchasing)

- Follow the installation instruction inside the Rollease Automate package to install the battery and/ or solar panel.
- NOTE - THE SOLAR PANEL WORKS ONLY WITH THE RECHARGEABLE BATTERY PACK.**

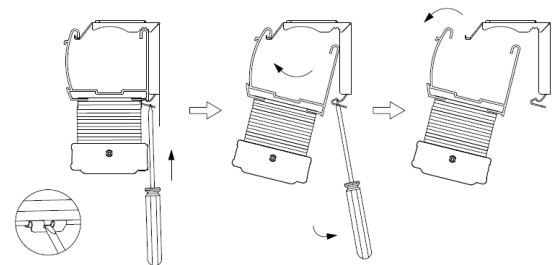
3. Attach the cell shade

- Position the headrail with the front lip resting on the top hooks of all the brackets.
- Push the bottom of headrail firmly upward and toward the window until the groove at the bottom of the headrail snaps into place.



4. How to remove the shade from the brackets

- Raise the shade completely.
- Use a flat screw to push the bracket tab toward to the wall. Once you hear a “click”, then the shade will be released from the bracket.
- Repeat above step to release the shade from other brackets.



This motorized shade is already connected to the remote and programmed with Upper and Lower Limits. Option to program “My Favorite Position”, follow the instruction inside the remote box. Enjoy your new motorized shade!

Care and Clean

- Wipe the shade periodically with a soft dust cloth or dusting mitt, or vacuum with a lowest speed.

Notes

- Do not spill water to the headrail and the remote.
- Do not clean/ operate the motorized shade with wet hands
- The warranty for your shades does not cover damage caused by improper cleaning.
- Changing the batteries or recharging the battery pack won't change the programming setting.

